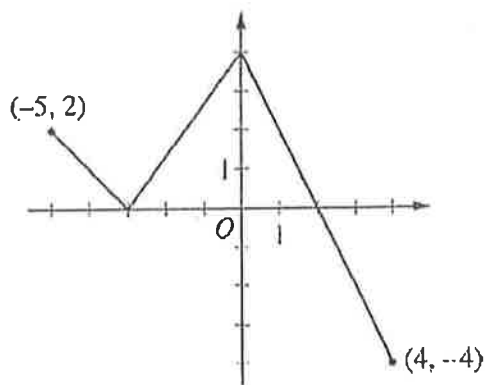


**AP[®] CALCULUS AB/CALCULUS BC
2014 SCORING GUIDELINES**

Question 3

The function f is defined on the closed interval $[-5, 4]$. The graph of f consists of three line segments and is shown in the figure above.

Let g be the function defined by $g(x) = \int_{-3}^x f(t) dt$.



Graph of f

- (a) Find $g(3)$.
- (b) On what open intervals contained in $-5 < x < 4$ is the graph of g both increasing and concave down? Give a reason for your answer.
- (c) The function h is defined by $h(x) = \frac{g(x)}{5x}$. Find $h'(3)$.
- (d) The function p is defined by $p(x) = f(x^2 - x)$. Find the slope of the line tangent to the graph of p at the point where $x = -1$.

(a) $g(3) = \int_{-3}^3 f(t) dt = 6 + 4 - 1 = 9$

1 : answer

(b) $g'(x) = f(x)$

The graph of g is increasing and concave down on the intervals $-5 < x < -3$ and $0 < x < 2$ because $g' = f$ is positive and decreasing on these intervals.

2 : { 1 : answer
1 : reason

(c) $h'(x) = \frac{5xg'(x) - g(x)5}{(5x)^2} = \frac{5xg'(x) - 5g(x)}{25x^2}$

3 : { 2 : $h'(x)$
1 : answer

$$h'(3) = \frac{(5)(3)g'(3) - 5g(3)}{25 \cdot 3^2}$$

$$= \frac{15(-2) - 5(9)}{225} = \frac{-75}{225} = -\frac{1}{3}$$

(d) $p'(x) = f'(x^2 - x)(2x - 1)$

3 : { 2 : $p'(x)$
1 : answer

$$p'(-1) = f'(2)(-3) = (-2)(-3) = 6$$