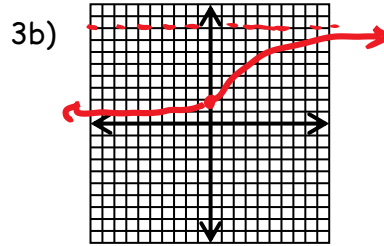
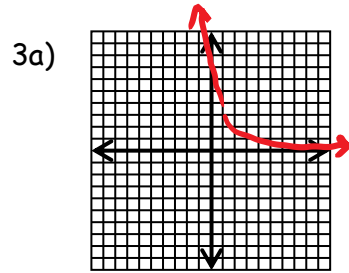


**Review SS3.1 - 3.4 Partner Sheet - Answer Key**

1a) S   b) N   c) A   d) N   e) A

2a) N   b) S   c) N   d) N   e) N

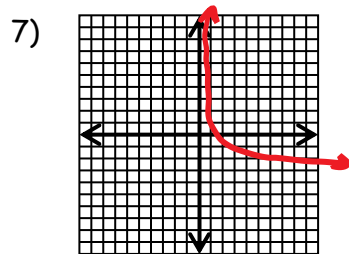


4)  $P = 14000(3)^{\frac{t}{7}}$  where P = population and t = time (in years)

5) 
$$y = \frac{26}{1 + 12\left(\frac{1}{2}\right)^x}$$

6a)  $B = 382(1.041)^t$

6b) 11.24 years



8) Shift left 3, reflect across the y-axis and vertically stretch by a factor of  $\frac{1}{\log 5}$  (approximately 1.43)

9a) -3      9b)  $-\frac{5}{2}$

10) 0.458

11) 2.381

12) 3.846

13) 2