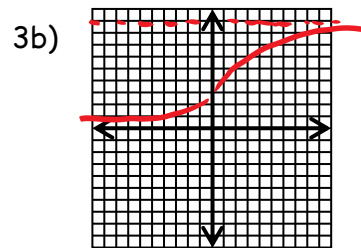
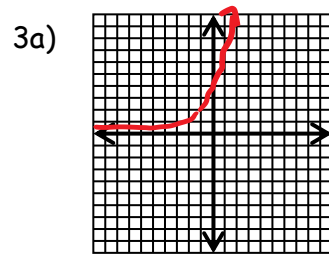


Review §§3.1 - 3.4 Solo Sheet - Answer Key

1a) S b) N c) S d) A e) N

2a) A b) S c) A d) N e) N

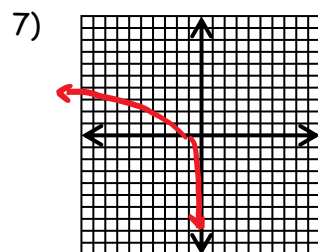


4) $P = 23000(2)^{\frac{t}{5}}$ where P = population and t = time (in years)

5)
$$y = \frac{51}{1 + 16\left(\frac{1}{2}\right)^x}$$

6a) $B = 520(1.023)^t$

6b) 59.24 years



8) Shift left 7 and vertically shrink by a factor of $\frac{1}{\log 15}$ (approximately 0.85)

9a) -4 9b) $-\frac{7}{3}$

10) 1.829

11) 1.533

12) 561.402

13) 4